



Auxiliary Membrane Filtration Equipment

The cover and all product wetted parts are made of stainless steel (AISI 316L). The product wetted diaphragm is made of Viton®. It is possible to change elevation range on site.

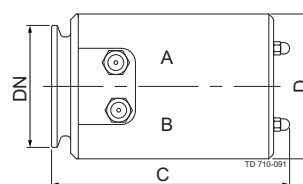
- Reverse action type, increasing signal output at falling level (standard version)
- Direct action type, decreasing signal output at falling level



P-Band:	0-200 mm W.G.
Accuracy:	± 10%
Elevation:	Min. 200 mm, max. 3200 mm
Air supply:	1.4 bar
Air signal, reverse acting type:	1-0.2 bar
Air signal, direct acting type:	0.2-1 bar

Weight: 1.8 kg

Product (DN): Clamp, 51 mm (2" ISO 2852)
Air supply (IN): 6 mm air hose or 1/8" BSP female
Air signal (OUT): 6 mm air hose or 1/8" BSP female



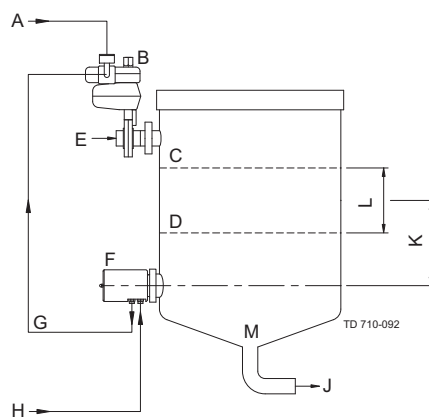
A = out B = in

C	D
125	ø76

Reverse action type

Increasing output signal at falling level

Code No. 106179

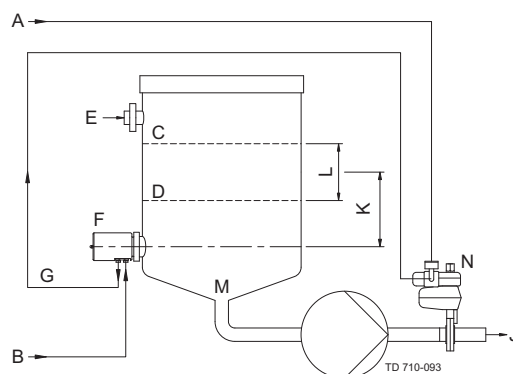


A	B	C	D	E	F	G	H	J	K	L	M
Air supply	Control valve	Closed valve	Open valve	Inlet	Level transmitter	Air signal	Air supply	Outlet	Elevation	P-Band	Tank
5.6 bar	-	0.2 bar	1.0 bar	-	-	1.0-0-2 bar	1.4 bar	-	200-3200	200	-

Direct action type

Decreasing output signal at falling level

Code No. 513934



A	B	C	D	E	F	G	J	K	L	M	N
Air supply	Air supply	Open valve	Closed valve	Inlet	Level transmitter	Air signal	Outlet	Elevation	P-Band	Tank	Control valve
5.6 bar	1.4 bar	1.0 bar	0.2 bar	-	-	0.2-1.0 bar	-	200-3200	200	-	-

Alfa Laval reserves the right to change specifications without prior notification.

How to contact Alfa Laval

Contact details for all countries are continually updated on our website. Please visit www.alfalaval.com to access the information direct.